

Journal section: Operative Dentistry and Endodontics  
 Publication Types: Research

doi:10.4317/jced.52824  
<http://dx.doi.org/10.4317/jced.52824>

## Growth kinetics and characterization of human dental pulp stem cells: Comparison between third molar and first premolar teeth

Davood Mehrabani <sup>1,2,3</sup>, Parisa Mahdiyari <sup>1</sup>, Kianoosh Torabi <sup>4</sup>, Reza Robati <sup>2</sup>, Shahrokh Zare <sup>1</sup>, Mehdi Dianatpour <sup>1,5</sup>, Amin Tamadon <sup>1</sup>

<sup>1</sup> Assistant Professor of Stem Cell and Transgenic Technology Research Center, Shiraz University of Medical Sciences, Shiraz, Iran

<sup>2</sup> Assistant Professor of Department of Developmental Biology, Science and Research Branch, Islamic Azad University, Fars, Iran

<sup>3</sup> Assistant Professor of Department of Regenerative Medicine, University of Manitoba, Winnipeg, Manitoba, Canada

<sup>4</sup> Associate Professor of Department of Fixed Prosthodontics, Faculty of Dentistry, Shiraz University of Medical Sciences, Shiraz, Iran

<sup>5</sup> Assistant Professor of Department of Medical Genetics, School of Medicine, Shiraz University of Medical Sciences, Shiraz, Iran

Correspondence:  
 Faculty of Dentistry  
 Shiraz University of Medical Sciences  
 Shiraz, Iran  
[ktorabi@sums.ac.ir](mailto:ktorabi@sums.ac.ir)

Mehrabani D, Mahdiyari P, Torabi K, Robati R, Zare S, Dianatpour M, Tamadon A. Growth kinetics and characterization of human dental pulp stem cells: Comparison between third molar and first premolar teeth. J Clin Exp Dent. 2017;9(2):e172-7.  
<http://www.medicinaoral.com/odo/volumenes/v9i2/jcedv9i2p172.pdf>

Received: 23/10/2015  
 Accepted: 14/05/2016

Article Number: 52824 <http://www.medicinaoral.com/odo/indice.htm>  
 © Medicina Oral S. L. C.I.F. B 96689336 - eISSN: 1989-5488  
 eMail: [jced@jced.es](mailto:jced@jced.es)  
**Indexed in:**  
 Pubmed  
 Pubmed Central® (PMC)  
 Scopus  
 DOI® System

### Abstract

**Background:** Dental pulp stem cells (DPSCs) play an important role in tissue regeneration. This study compares the growth kinetics and characterization of third molar and first premolar human DPSCs.

**Material and Methods:** Dental pulp tissues were isolated from human first premolar and third molar teeth and were digested by treating them with collagenase type I. Single-cell suspensions from each dental pulp were seeded in T25 culture flasks and the media were replaced every 3 days until 70% confluence. The cells were enumerated to determine the population doubling time (PDT). Cells were characterized using flow cytometry, RT-PCR and osteogenic medium for differentiation of DPSCs. Karyotyping assay was also performed till passage 7th.

**Results:** The DPSCs had spindle-shaped morphology. There was an increase in PDT in third molar DPSCs when compared to first premolar teeth. Positive expression of CD44, CD73, and CD90 and negative expression of CD34 and CD45 were illustrated. A normal karyotype was visible for all seven passages. The Alizarin red staining was positive for osteogenic induction of DPSCs.

**Conclusions:** When DPSCs are needed, third molar teeth can be a good and convenient candidate for cell transplantation, yielding high number of cells with mesenchymal characteristics. They can be a source for further investigations *in vitro* and work on tissue engineering protocols.

**Key words:** Stem cells, dental pulp, growth kinetics, characterization.

### Introduction

Isolation of mesenchymal stem cells (MSCs) has been reported from bone marrow (BM) (1), adipose tissue (2), endometrium (3), periodontal ligament (4), and dental

pulp (5). MSCs are undifferentiated clonogenic cells capable of both self-renewal and multilineage differentiation (6) and their cell-based therapies are emerging as an alternative treatment choice for promotion of the

functional recovery in patients suffering from several disorders that can be a major cause of death and permanent disability (7).

Multilineage properties of MSCs was shown to be dependent on the source and the donor which is responsible for their different behavior *in vivo* and their differentiation properties into mesodermal and ectodermal cellular lineages (8). Dental pulp stem cells (DPSCs) play an important role in tissue regeneration (9). Third molar tooth (10) and exfoliated deciduous teeth were reported as good sources of DPSCs (11). Presence of DPSCs in the pulp tissue of rat, mouse, canine, porcine, ovine, rabbit, chimpanzee, and rhesus has also been reported (12). There have been no systematic comparisons on DPSCs from different tooth sources. This study compared the growth kinetic and characterization of third molar and first premolar human DPSCs.

## Material and Methods

### -Isolation of DPSCs

Third molar and first premolar teeth (Each: n=6) of 10-18 years old patients were obtained after extraction because of orthodontic reasons, under local anesthetic, with informed consent and institution ethical approval. Teeth roots were with viable pulp tissue. Dental pulp was pulled out and washed twice with sterile phosphate buffered saline (PBS; Gibco, USA) supplemented with antibiotics (100 U/ml penicillin and 100 µg/ml streptomycin) (Sigma, USA) and 2.5 µg/ml fungisone (Sigma, USA). Pulp tissue was minced into 1-2 mm fragments and were digested in a 3 mg/mL collagenase type I (Invitrogen, USA) solution for 30 min at 37°C. They were transferred to T25 culture flasks containing Dulbecco's Modified Eagle Medium (DMEM; Gibco, USA), 10% fetal bovine serum (FBS; Gibco, USA), 1% penicillin and streptomycin, 1% L-glutamine (Sigma, USA) and were cultured and incubated in a CO<sub>2</sub> incubator at 37°C with 5% CO<sub>2</sub> and saturated humidity. The medium was replaced every 2 days and cells were subcultured at 80% confluence.

### -Population doubling time

To enumerate the cells, DPSCs of third molar and first premolar ( $3 \times 10^4$ ,  $6 \times 10^4$  and  $11 \times 10^4$  cells/per well) at the seventh passage were seeded into 24-well culture plates. The cell number was assessed after 7 days by trypsinization (3 replicates for each time point). The cells were stained by trypan blue (Sigma, USA) and counted using a hemocytometer under a light microscope. The population duplication times (PDT), or the time required for a culture to double in number, was calculated with the following formula:  $PDT = T \ln 2 / \ln(X_e/X_b)$ , T is the incubation time in hours, X<sub>b</sub> is the cell number at the beginning of the incubation time and X<sub>e</sub> is the cell number at the end of the incubation time.

### -Cell viability

Trypan blue exclusion test (0.4% trypan blue in PBS)

was performed for each passage to determine the number of viable and nonviable cells.

### -Morphologic evaluation

DPSCs from both third molar and first premolar teeth, at each passage, were morphologically evaluated under inverted microscope (Olympus, Japan).

### -Characterization by flow cytometry

After harvesting, DPSCs (4<sup>th</sup> to 7<sup>th</sup> passage) were washed in cold PBS supplemented with 0.5% BSA (Sigma-Aldrich, Saint Louis, MO, USA). Aliquots of  $5 \times 10^5$  cells were labeled (30 min in the dark at 4°C) with monoclonal antibodies specific for human markers associated with mesenchymal and hematopoietic lineages. Namely, mouse antihuman antibodies against the following antigens were used: FITC-labeled anti-CD34 (1:20; DAKO, Carpinteria, CA, USA), and anti-CD44 and anti-CD90 (1:20; DAKO). To determine the level of nonspecific binding, fluorochrome conjugated isotype control antibodies (BD Biosciences, Heidelberg, Germany) were used. Flow cytometry was performed using a CyFlow CL (Partec, Münster, Germany).

### -Characterization by RT-PCR

To determine the expression of mesenchymal stem cell markers, RT-PCR was performed for DPSCs of all teeth. First, total RNA was extracted using the column RNA isolation kit (Denazist-Asia, Iran) in accordance with the manufacturer's instructions. Total RNA concentration was evaluated by spectrophotometer. Then, complementary DNA (cDNA) was provided from RNA samples using AccuPower Cycle Script RT PreMix Kit (Bioneer, Korea) according to the manufacturer's instructions.

Briefly, 15 µL of total RNA was used for each reaction and the volume reached up to 20 µL with the DEPC water. Twelve thermal cycles was performed as follows: 30 sec at 20°C for primer annealing, 4 min at 42°C for cDNA synthesis, 30 sec at 55°C for melting secondary structure and cDNA synthesis and 5 minutes at 95°C for inactivation. In the third step, 1 µL of template (cDNA) was mixed with other reagents consisting of PCR buffer, MgCl<sub>2</sub>, H<sub>2</sub>O, dNTPs, Taq DNA polymerase, and forward and reverse primers (H45 and H73).

Then, the microtubules containing 20 µL of the above mixture were put in thermocycler (Eppendorf Mastercycler Gradient, Eppendorf, Hamburg, Germany). Thirty amplification cycles were run, consisting of 30 sec denaturation at 95°C, 30 sec annealing at 64°C and 30 sec extension at 72°C with the 2 min at 95°C for primary denaturation and 5 min at 72°C for final extension. PCR products were evaluated for the presence of considered bands by gel electrophoresis with the aid of DNA safe stain in 1.5% agarose gel medium. Produced bands were visualized under UV radiation by Gel documentation system (UVtec, Cambridge, UK).

### -Karyotype analysis

Karyotyped DPSCs (subcultured at a 1:3 dilution, both

early passages and after reaching Hayflick’s limit) were subjected to a 4-hour demecolcemide (Sigma, USA), incubated for 24 hours and then addition of trypsin-EDTA (Sigma, USA) and hypotonic KCl (Sigma, USA) and finally fixation in acid/alcohol solution. The number of chromosome was determined under a microscope with an oil immersion objective. Images were captured using digital camera and light microscopy to analyze the metaphase.

**-Osteogenic induction**

Approximately  $1 \times 10^4$  cells of DPSCs were transferred into two 35 mm culture dishes (Corning, Germany) including the control media composed of DMEM-F12, (Bio West, France) supplemented with 10% FBS (FBS, BioIdea, Iran), 1% penicillin/streptomycin and 1% L-glutamine (BioIdea, Iran) and the osteogenic media consisted of DMEM-F12, 10% FBS, 1% penicillin-streptomycin, L-glutamine, 50  $\mu\text{g/ml}$  L-ascorbic acid-2-phosphate (Sigma) 10<sup>-7</sup> M dexamethasone (Sigma, USA), and 10 mM  $\beta$ -glycerophosphate (Sigma, USA). The medium was replaced every 3 days. On day 21, cultures were fixed with 70% ethanol for 15 min and stained for mineralization with 2% alizarin red S. The cell layers were then evaluated with light microscope.

**Results**

**-Growth curve of DPSCs**

Growth curves and population doubling times (PDT) of the seventh passage of DPSCs when seeding different densities of cells per well in 24 well culture plates were

shown in figures 1A-D. The growth curve of DPSCs isolated from human third molar teeth while the initial density of seeded cells per well were  $3 \times 10^4$  cells revealed that the PDT was 29.8 hours (Fig. 1A). The growth curve of DPSCs isolated from human first premolar teeth at  $6 \times 10^4$  cells per well initially seeded denoted to the PDT was 40.1 hours (Fig. 1B) showing that DPSCs isolated from human third molar teeth proliferated much more faster.

When for first premolar teeth, the initial density of seeded cells per well was  $11 \times 10^4$  cells, the PDT increased to 112.9 hours (Fig. 1C). The comparison of growth curve of first premolar teeth with different initial density of seeded cells of  $6 \times 10^4$  (green line) and  $11 \times 10^4$  (red line) cells per well demonstrated that the cell proliferation rate was significantly more in DPSCs isolated from human third molar teeth (Fig. 1D).

**-Morphology of DPSCs**

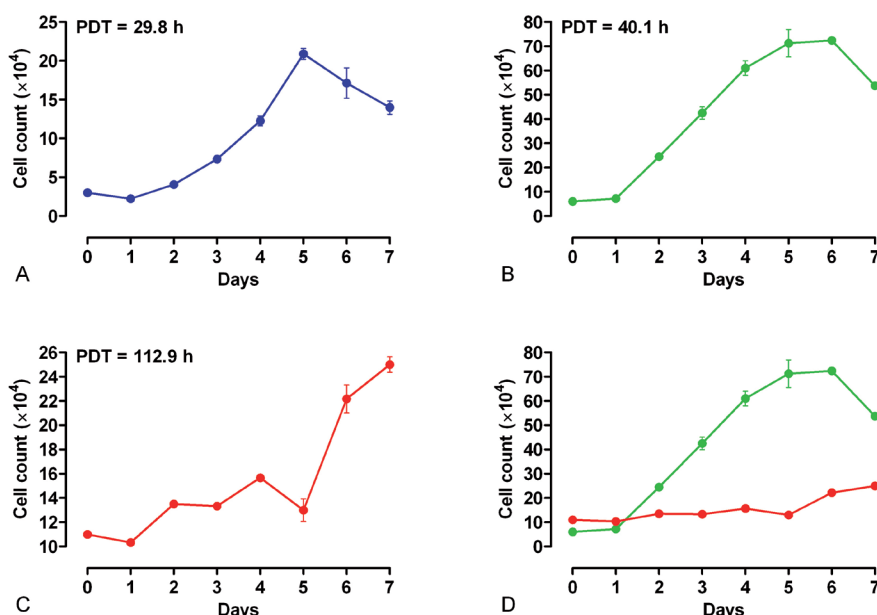
Ten days after expansion of DPSCs, both third molar and first premolar teeth showed a fibroblast-like, elongated, spindle-shaped morphology and adherent property under a convert microscope at all passages (Fig. 2).

**-Characterization by flow cytometry**

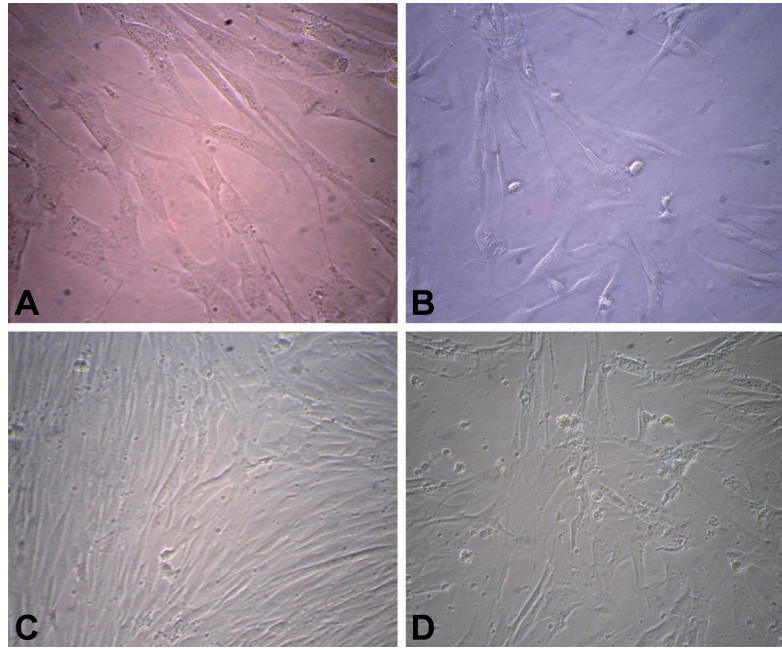
DPSCs isolated from both third molar and first premolar teeth were positive for expression of CD44 and CD90 and negative for CD34 expression (Fig. 3A).

**-Characterization by RT-PCR**

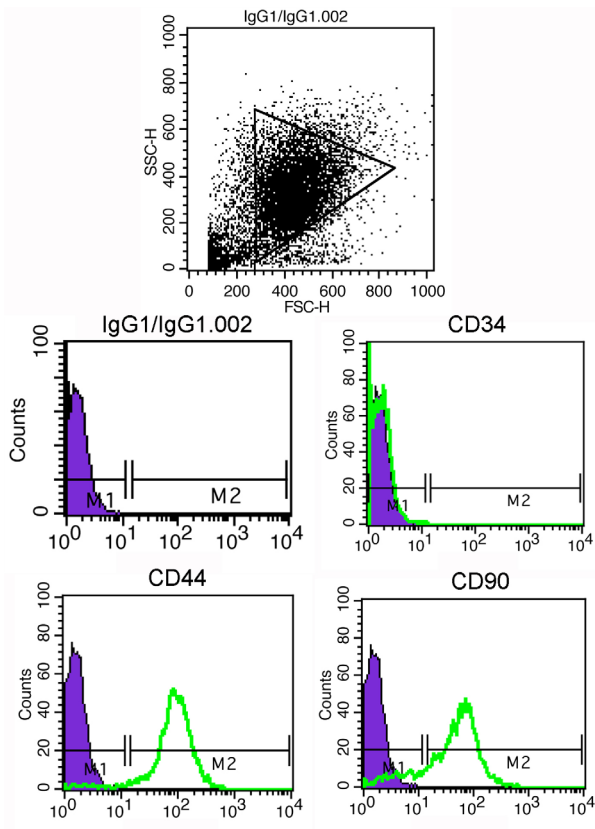
Using RT-PCR, it was shown that all cells till passage 7 expressed CD73. CD45 was not expressed in any of DPSCs (Fig. 3B).



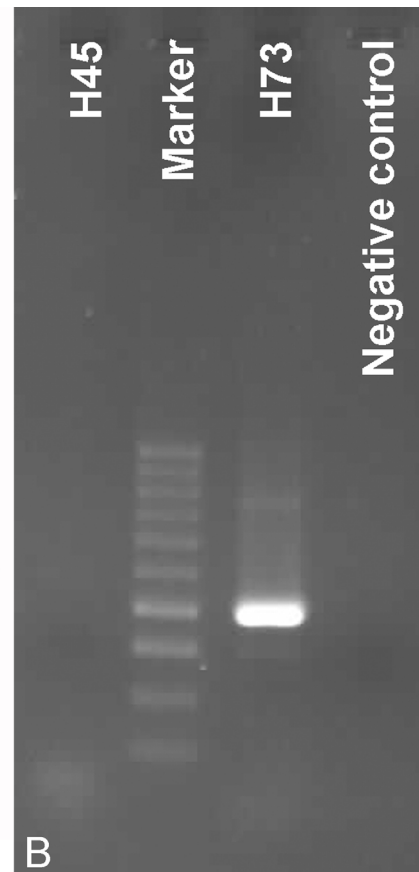
**Fig. 1.** Growth curves and PDT of DPSCs isolated from human. **A)** third molar tooth (with initial density of  $3 \times 10^4$  cells per well); **B)** first premolar tooth (with initial density of  $6 \times 10^4$  cells per well); **C)** first premolar tooth (with initial density of  $11 \times 10^4$  cells per well) and **D)** a comparison between growth curves of both cultures initiated with two different numbers of cells,  $6 \times 10^4$  (green line) and  $11 \times 10^4$  (red line) cells per well.



**Fig. 2.** Morphology of human DPSCs isolated from different sources. **A)** primary culture of first premolar teeth ( $\times 40$ ); **B)** DPSCs isolated from first premolar in passage 7 ( $\times 40$ ); **C)** DPSCs isolated from primary culture of third molar teeth ( $\times 20$ ); and **D)** DPSCs isolated from third molar in passage 7 ( $\times 20$ ).



**A**



**B**

**Fig. 3.** Characterization of DPSCs by flow cytometry and RT-PCR. **A)** Cells were uniformly negative for CD34, and positive for CD44 and CD90. **B)** Positive expression of CD73 compared with negative expression of CD45 using RT-PCR technique.

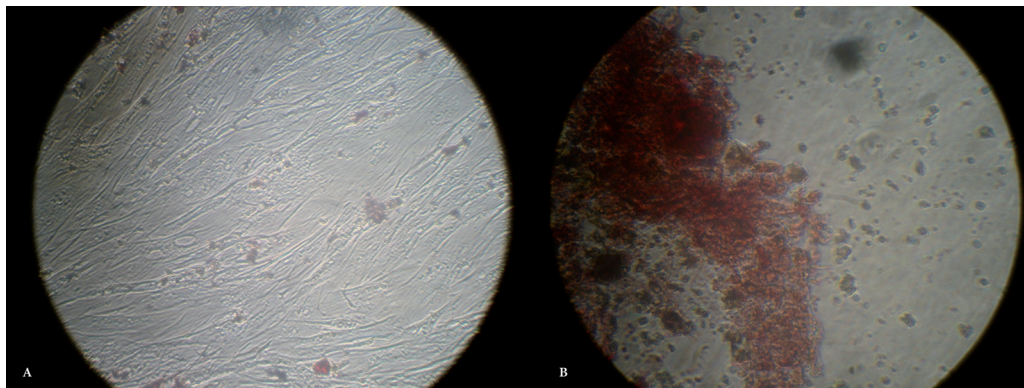
**-Karyotype analysis**

The chromosome number of DPSCs isolated from both third molar and first premolar teeth was 2n=46, containing 44 autosomal and 2 sex chromosomes in all passages (Fig. 4A, 4B, respectively).

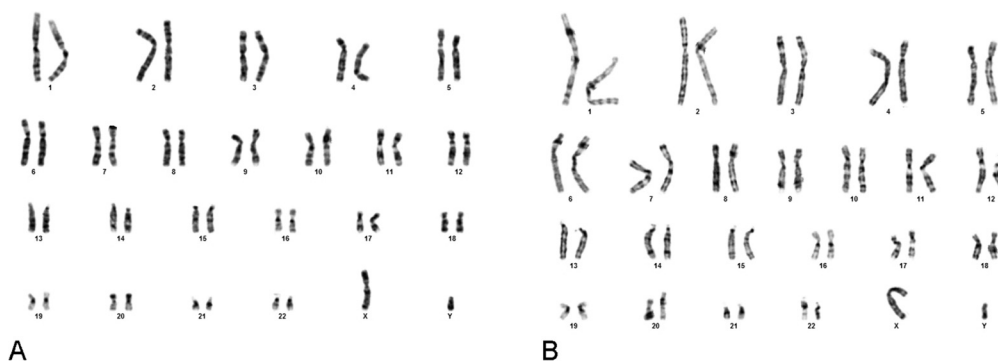
**-Osteogenic induction**

Analysis of alizarin red S stained areas demonstrated the osteogenic potential of DPSCs isolated from both third molar and first premolar teeth at passage 7 (osteogenic medium: Fig. 5A,B).

were isolated from third molar had better growth rate versus DPSCs isolated from deciduous teeth which is similar to our findings (16). Comparison of growth curves indicated that the proper density of initial cell number for cell culturing could be considered as a significant parameter for cell culturing which was also noticed in our study (17). An increase in cell density during seeding was shown to display a negative role in cell proliferation (18). We also illustrated that initial number of  $6 \times 10^4$  cells per well was an adequate number for cell culture and ex-



**Fig. 4.** The chromosome number of DPSCs isolated from both third molar and first premolar teeth (2n=46, 44 autosomal and 2 sex chromosomes, Figure 4A and 4B, respectively).



**Fig. 5.** Analysis of alizarin red S staining of DPSCs isolated from both third molar and first premolar teeth at passage 7 (osteogenic medium: Figure 5A and 5B).

**Discussion**

Our study showed that DPSCs isolated from both third molar and first premolar teeth were mesenchymal stem cells with spindle shape morphology, multipotency, and expression of mesenchymal and lack of hematopoietic stem cell markers (13). Considering growth kinetic of DPSCs, the difference between the growth curves of DPSCs from third molar and deciduous teeth was previously investigated (14). The properties of permanent teeth in regenerative medicine was previously investigated and the advantages of deciduous teeth as a new source of stem cells were demonstrated (15). In contrast, Eslaminejad *et al.* demonstrated that DPSCs

There has been no comparisons in literature to evaluate the growth kinetic of DPSCs from third molar and first premolar teeth. Our present study showed that DPSCs of third molar teeth had a lower PDT and proliferated faster than DPSCs from first premolar teeth. Regarding characterization of DPSCs by flow cytometry, we demonstrated that DPSCs isolated from both third molar and first premolar teeth were positive for expression of CD44 and CD90 and negative for CD34 confirming mesenchymal property of DPSCs (13,18,19). In our study when using RT-PCR, it was shown that DPSCs expressed CD73 and lacked expression of CD45 which confirm mesenchymal properties of DPSCs as reported before (20).

The differentiation potential of harvested DPSCs has an important role in tissue engineering. We showed that DPSCs from both third molar and first premolar teeth were positive for osteogenic differentiation and successfully differentiated into osteoblasts (11). Genetic stability is considered an important factor in cell culture in different passages and to obtain a normal cell line (17). We noticed a normal karyotyping for DPSCs from both third molar and first premolar teeth up to 7th passage. The successful clinical use of DPSCs in different trials for bone repair showed that DPSCs can be an appropriate cell source for transplantation (16) with immune-modulating properties in cell therapies (7).

DPSCs are derived from various dental tissues such as human exfoliated deciduous teeth, apical papilla, periodontal ligament and dental follicle tissue (21). In our study, the harvested cells were able to expand up to passage 7 and were positive for mesenchymal cell markers and with multi-lineage differentiation properties as described before to have a MSCs phenotype and differentiation properties into chondrocytes, osteoblasts, cardiomyocytes, neuron, liver cells and  $\beta$  cells of islet of pancreas (21).

## Conclusions

We have compared the PDT of DPSCs of third molar teeth with first premolar teeth and found that DPSCs from third molar teeth proliferated much faster. So we can conclude that if DPSCs are searched for cell therapy purposes in dental related problems, DPSCs of third molar teeth can be a good candidate and convenient source for cell transplantation, tissue engineering and regenerative medicine based on their short PDT.

## References

1. Fafián-Labora J, Fernández-Pernas P, Fuentes I, De Toro J, Oreiro N, Sangiao-Alvarellos S, et al. Influence of age on rat bone-marrow mesenchymal stem cells potential. *Sci Rep*. 2015;5:16765.
2. Mehrabani D, Hassanshahi MA, Tamadon A, Zare S, Keshavarz S, Rahmanifar F, et al. Adipose tissue-derived mesenchymal stem cells repair germinal cells of seminiferous tubules of busulfan-induced azoospermic rats. *J Hum Reprod Sci*. 2015;8:103-10.
3. Ghobadi F, Mehrabani D, Mehrabani G. Regenerative potential of endometrial stem cells: a mini review. *World J Plast Surg*. 2015;4:3-8.
4. Zhang FQ, Meng HX, Han J, Ding Q. Isolation, culture and ultrastructure analysis of mesenchymal stem cells from human periodontal ligament. *Beijing Da Xue Xue Bao*. 2014;46:274-7.
5. Ferro F, Spelat R, Baheney CS. Dental Pulp Stem Cell (DPSC) Isolation, Characterization, and Differentiation. *Methods Mol Biol*. 2014;1210:91-115.
6. Ai J, Ebrahimi S, Khoshzaban A, Jafarzadeh Kashi TS, Mehrabani D. Tissue engineering using human mineralized bone xenograft and bone marrow mesenchymal stem cells allograft in healing of tibial fracture of experimental rabbit model. *Iran Red Crescent Med J*. 2012;14:96-103.
7. Hosseinkhani M, Mehrabani D, Karimfar MH, Bakhtiyari S, Manafi A, Shirazi R. Tissue engineered scaffolds in regenerative medicine. *World J Plast Surg*. 2014;3:3-7.
8. Mehrabani D, Mehrabani G, Zare S, Manafi A. Adipose-derived stem cells (ADSC) and aesthetic surgery: a mini review. *World J Plast Surg*. 2013;2:65-70.

9. Saito MT, Silvério KG, Casati MZ, Sallum EA, Nociti FH Jr. Tooth-derived stem cells: Update and perspectives. *World J Stem Cells*. 2015;7:399-407.
10. Gronthos S, Mankani M, Brahimi J, Robey PG, Shi S. Postnatal human dental pulp stem cells (DPSCs) in vitro and in vivo. *Proc Natl Acad Sci USA*. 2000;97:13625-30.
11. Miura M, Gronthos S, Zhao M, Lu B, Fisher LW, Robey PG, et al. SHED: stem cells from human exfoliated deciduous teeth. *Proc Natl Acad Sci USA*. 2003;100:5807-12.
12. Ma L, Makino Y, Yamaza H, Akiyama K, Hoshino Y, Song G, et al. Cryopreserved dental pulp tissues of exfoliated deciduous teeth is a feasible stem cell resource for regenerative medicine. *PLoS ONE*. 2012;7:e51777.
13. Martacić JD, Francuski J, Luzajić T, Vuković N, Mojsilović S, Drndarević N, et al. Characterization of deciduous teeth stem cells isolated from crown dental pulp. *Vojnosanit Pregl*. 2014;71:735-41.
14. Shekar R, Ranganathan K. Phenotypic and growth characterization of human mesenchymal stem cells cultured from permanent and deciduous teeth. *Indian J Dent Res*. 2012;23:838-9.
15. Huang GT. A paradigm shift in endodontic management of immature teeth: conservation of stem cells for regeneration. *J Dent*. 2008;36:379-86.
16. Eslaminejad MB, Vahabi S, Shariati M, Nazarian H. In vitro growth and characterization of stem cells from human dental pulp of deciduous versus permanent teeth. *J Dent Tehran Univ Med Sci*. 2010;7:185-95.
17. Luo Z, Li D, Kohli MR, Yu Q, Kim S, He WX. Effect of Biodentine™ on the proliferation, migration and adhesion of human dental pulp stem cells. *J Dent*. 2014;42:490-7.
18. Suchanek J, Soukup T, Visek B, Ivancakova R, Kucerova L, Mokry J. Dental pulp stem cells and their characterization. *Biomed Pap Med Fac Univ Palacky Olomouc*. 2009;153:31-5.
19. Dokic J, Tomic S, Cerovic S, Todorovic V, Rudolf R, Colic M. Characterization and immunosuppressive properties of mesenchymal stem cells from periapical lesions. *J Clin Periodontol*. 2012;39:807-16.
20. Ponnaiyan D, Jegadeesan V. Comparison of phenotype and differentiation marker gene expression profiles in human dental pulp and bone marrow mesenchymal stem cells. *Eur J Dent*. 2014;8:307-13.
21. Potdar PD, Jethmalani YD. Human dental pulp stem cells: Applications in future regenerative medicine. *World J Stem Cells*. 2015;7:839-51.

## Acknowledgements

The author would like to acknowledge Shiraz University of Medical Sciences and Fars Islamic Azad University (Grant 9115007-91.10.30) for financial support of this study.

## Conflict of Interest

There is no conflict of interest.