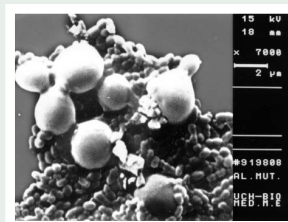
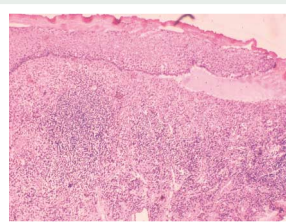
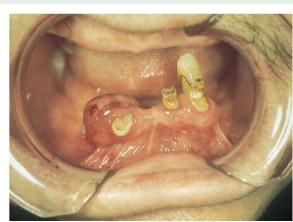


# MEDICINA ORAL

THE OFFICIAL PUBLICATION FOR:

- SPANISH SOCIETY OF ORAL MEDICINE,
- SPANISH SOCIETY FOR DENTISTRY FOR PATIENTS WITH DISABILITY AND SPECIAL NEEDS
- IBERO-AMERICAN ACADEMY OF ORAL PATHOLOGY AND MEDICINE

EDITORS: Prof. J. V. Bagán Prof. C. Scully



## Medicine and pathology

- Burning mouth and saliva.** *Chimenos E, Marques MS.* \_\_\_\_\_ **244**
- Peripheral giant-cell granuloma. Review of 13 cases.** *Gándara JM, Pacheco JL, Gándara P, Blanco A, García A, Madriñán P, Somoza M.* \_\_\_\_\_ **254**
- Antifungal topical therapy in oral chronic candidosis. A comparative study.** *López SA, Salati de Mugnolo N, Libero F, Benítez MB, Morelatto RA, Astrada de Verde L, Masih D.* \_\_\_\_\_ **260**
- Gingival disorders of immune origin.** *Castellanos JL.* \_\_\_\_\_ **271**

## Odontology in special patients

- Quantitative relationship between salivary level of *Streptococcus mutans* and *Candida albicans* in children with Down's syndrome.** *Linossier A, Vargas A, Villegas R, Chimenos E.* \_\_\_\_\_ **284**
- General and dental characteristics of Bloch-Sulzberger syndrome. Review of literature and presentation of a case report.** *Domínguez A, Aznar T, Cabrera E.* \_\_\_\_\_ **293**
- Buccodental pathology in patients with insulin-dependent diabetes mellitus: a clinical study.** *Miralles L, Silvestre FJ, Grau DM, Hernández A.* \_\_\_\_\_ **298**
- Alopecia areata of dental origin.** *Gil JA, Cutando A, Jiménez M<sup>a</sup>J.* \_\_\_\_\_ **303**

## Surgical Pathology

- Calcifying epithelial odontogenic tumor (Pindborg tumor).** *Belmonte R, Torres D, Mayorga F, García-Perla A, Infante P, Gutiérrez JL.* \_\_\_\_\_ **309**